

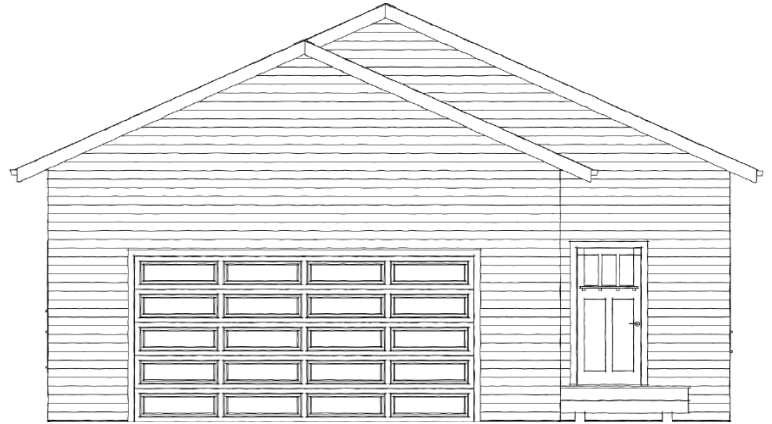
Option 4

\$379K

Only available at Sand Point Lake



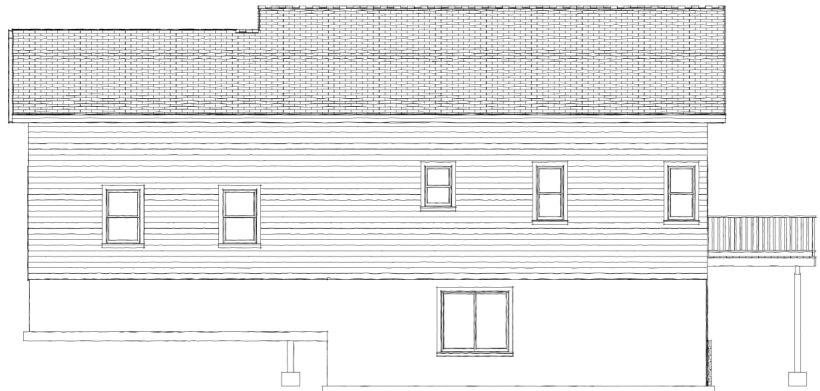
Lakeside Elevation



Street Elevation



Left Elevation



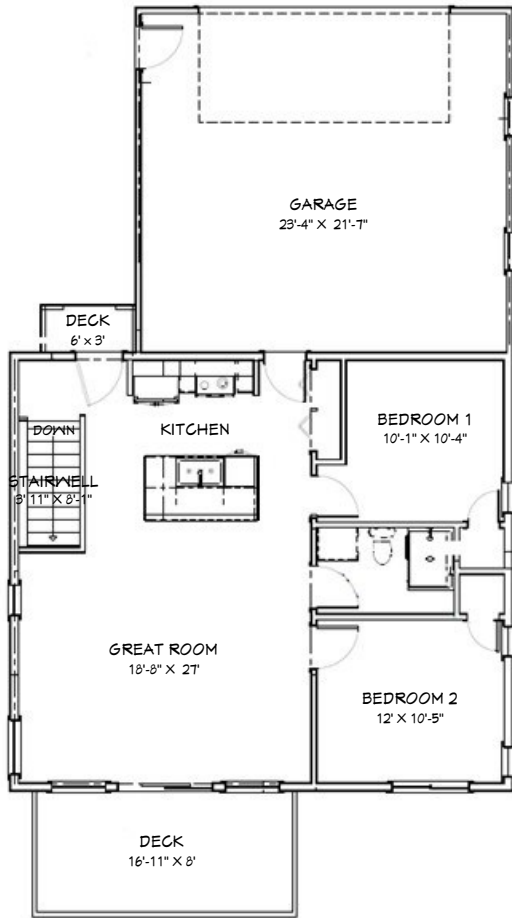
Right Elevation

Disclaimer: Plans may vary/change slightly.

Option 4

\$379K

Only available at Sand Point Lake



1st Floor

Total:

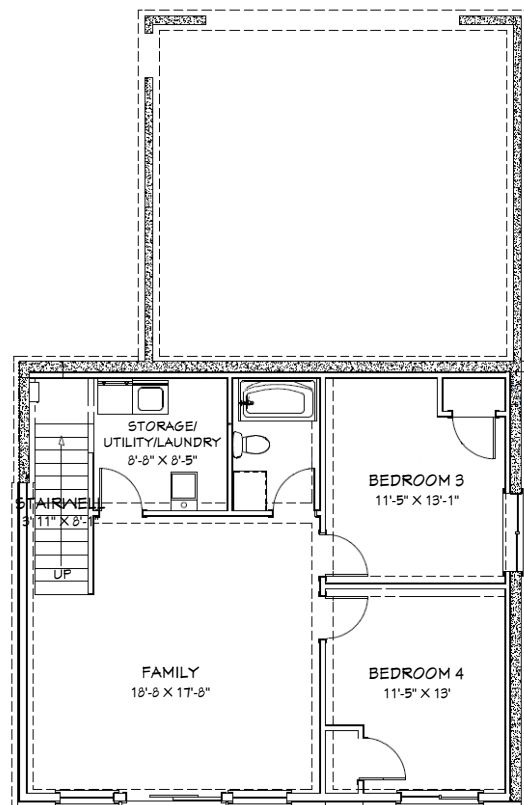
- 1,800 sq. ft.
- 4 Bedrooms & one storage/utility/laundry room
- 2 Baths
- 2- Stall Garage

Main Level:

- Great/Living Room
- 2 Bedrooms
- 1 Bath
- Kitchen and Dining

Walkout Basement:

- Family Room
- 2 Bedrooms
- 1 Bath
- Storage/Utility/Laundry Room



Walkout Basement

Disclaimer: Plans may vary/change slightly.

Option 4

\$379K

Only available at Sand Point Lake

Renderings:



Disclaimer: Plans may vary/change slightly.