

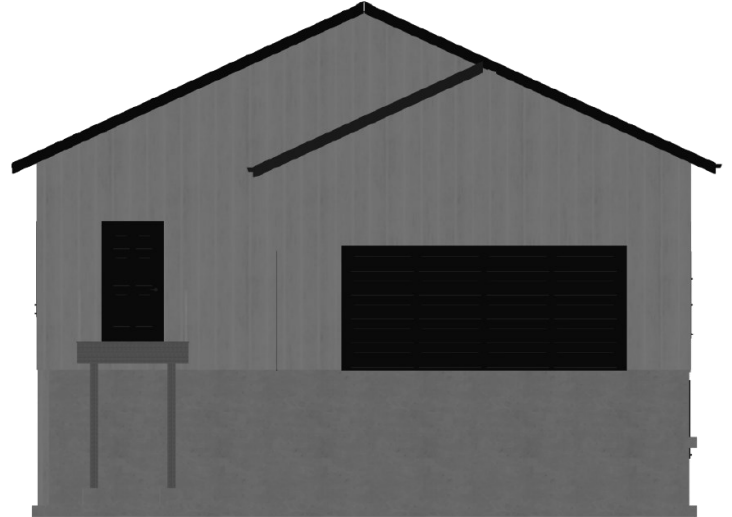
# Option 5

\$449K

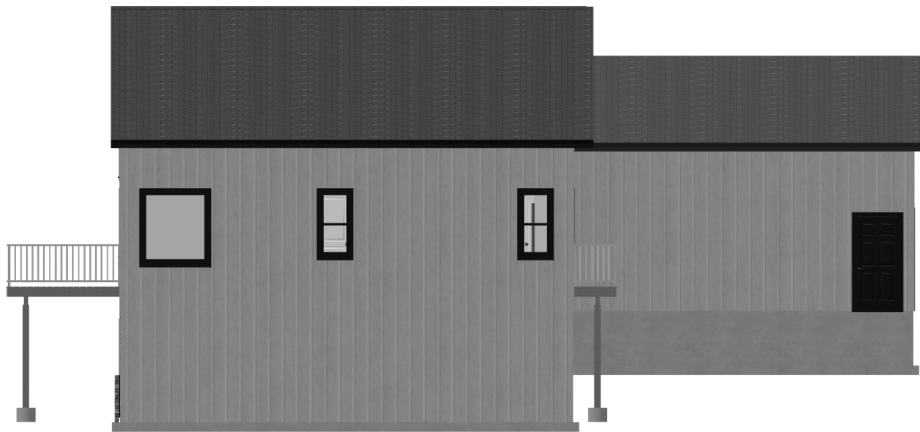
Only available at Sand Point Lake



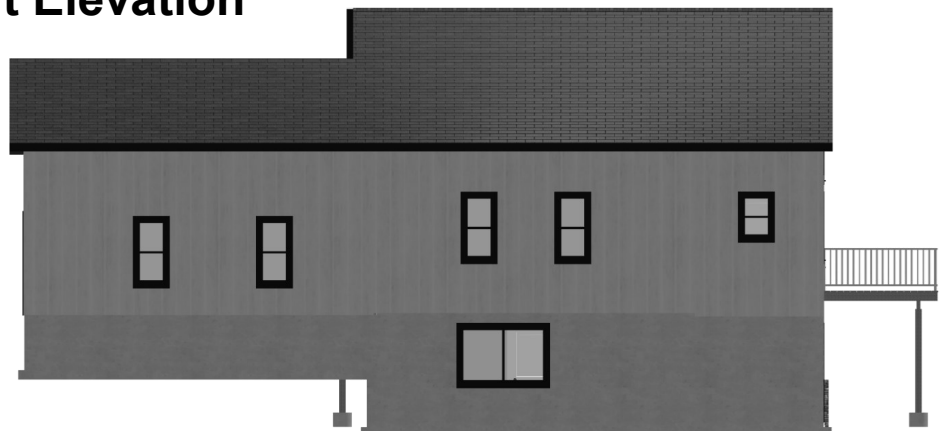
Lakeside Elevation



Street Elevation



Left Elevation



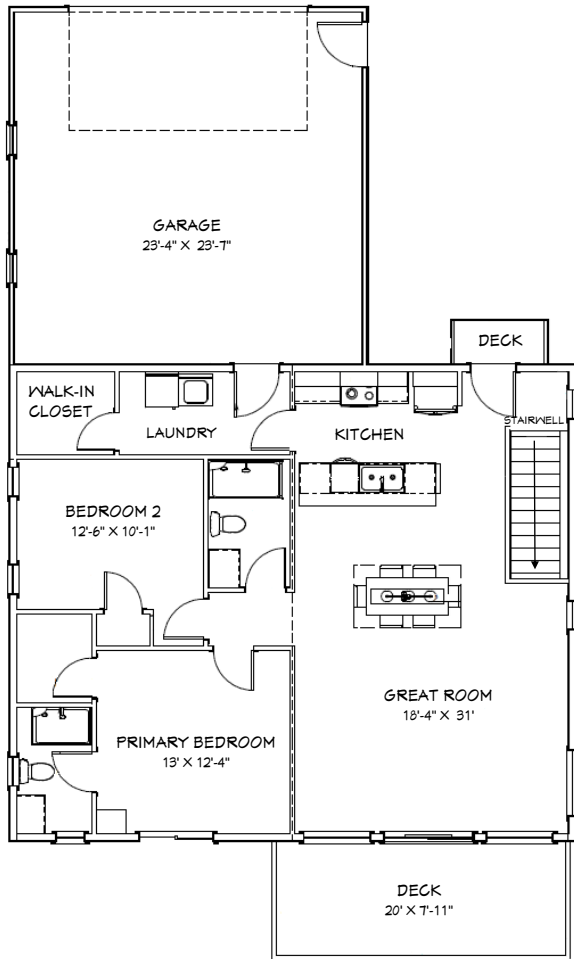
Right Elevation

Disclaimer: Plans may vary/change slightly.

# Option 5

**\$449K**

Only available at Sand Point Lake



**1st Floor**

## Total:

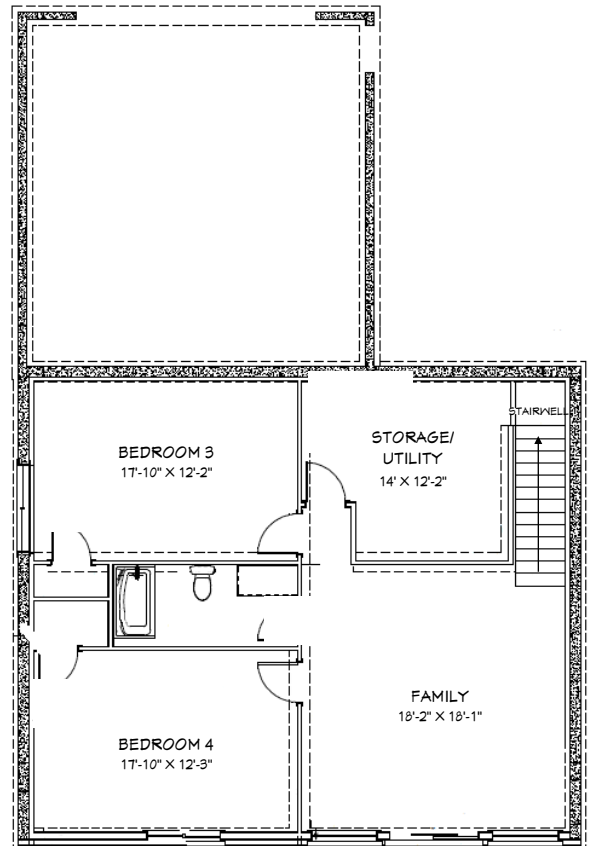
- 2,340 sq. ft.
- 4 Bedrooms / 3 Baths
- 1 Storage/Utility Room and 1 Laundry Room
- 2-Stall Garage

## Main Level:

- Great/Living Room
- Primary Suite and Bedroom
- 1 Bath
- Kitchen and Dining

## Walkout Basement:

- Family Room
- 2 Bedrooms
- 1 Bath
- Storage/Utility Room



Disclaimer: Plans may vary/change slightly.