

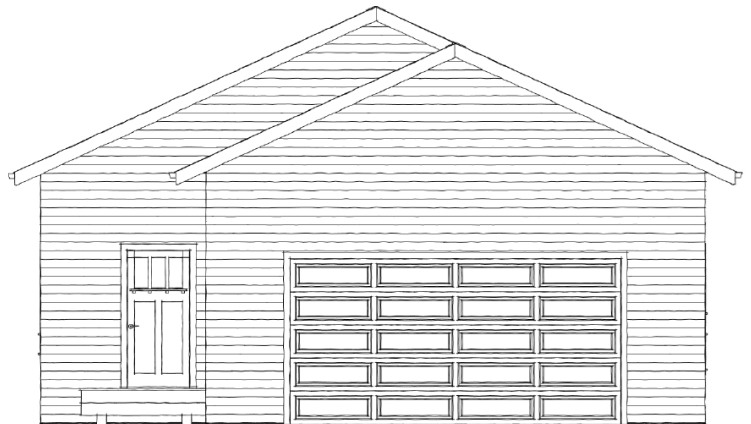
# Option 4

\$379K

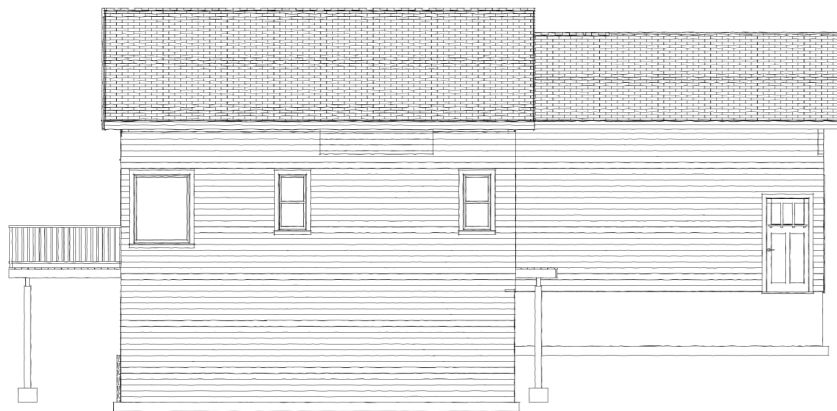
Only available at Sand Point Lake



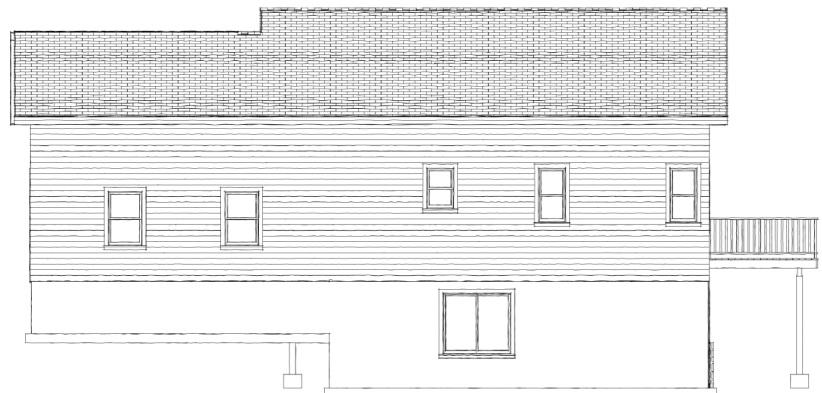
**Lakeside Elevation**



**Street Elevation**



**Left Elevation**



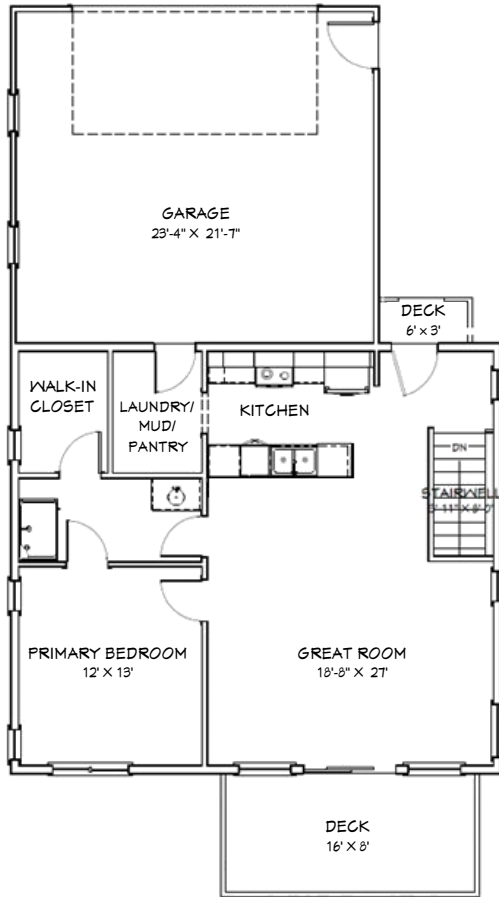
**Right Elevation**

Disclaimer: Plans may vary/change slightly.

# Option 4

\$379K

Only available at Sand Point Lake



**1st Floor**

### Total:

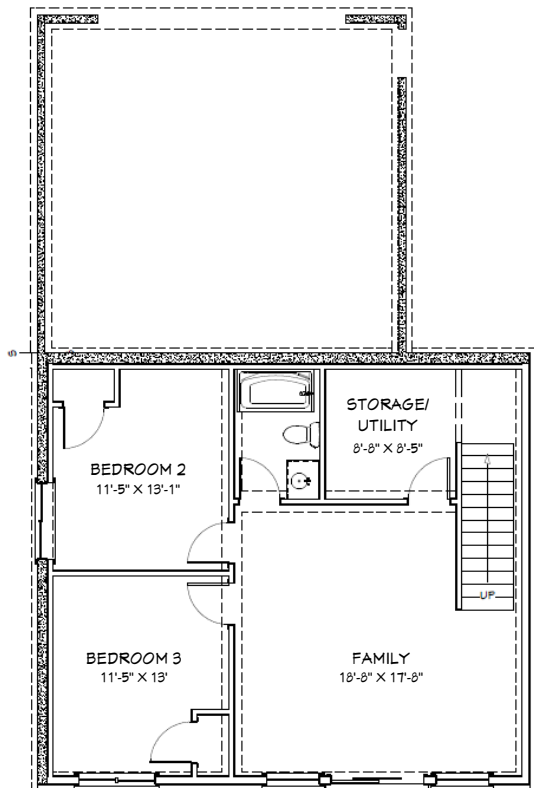
- 1,800 sq. ft.
- 3 Bedrooms & one storage/utility room and laundry room
- 2 Baths
- 2-Stall Garage

### Main Level:

- Great/Living Room
- Primary Suite
- 1 Bath
- Kitchen and Dining

### Walkout Basement:

- Family Room
- 2 Bedrooms
- 1 Bath
- Storage/Utility Room



**Walkout Basement**

Disclaimer: Plans may vary/change slightly.

# Option 4

\$379K

Only available at Sand Point Lake

## Main Floor Renderings:



Disclaimer: Plans may vary/change slightly.

# Option 4

\$379K

Only available at Sand Point Lake

## Walkout Basement/Lower Level Renderings:



Disclaimer: Plans may vary/change slightly.