

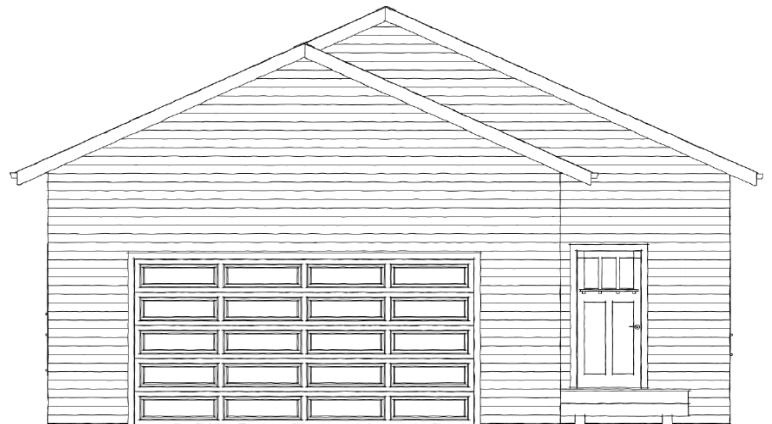
# Option 4

\$389K

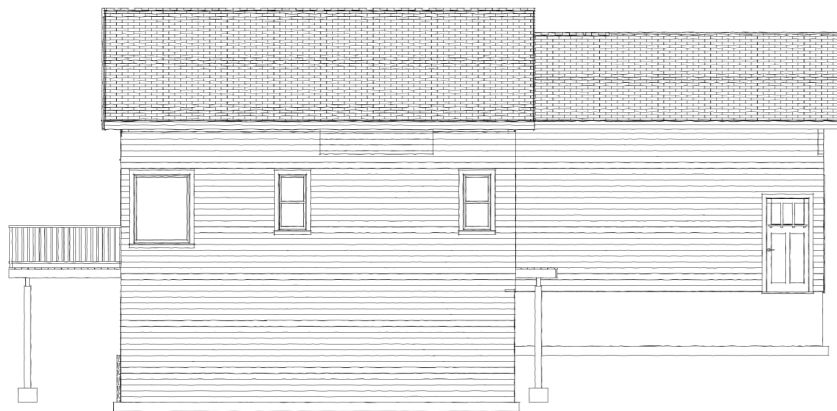
Only available at Sand Point Lake



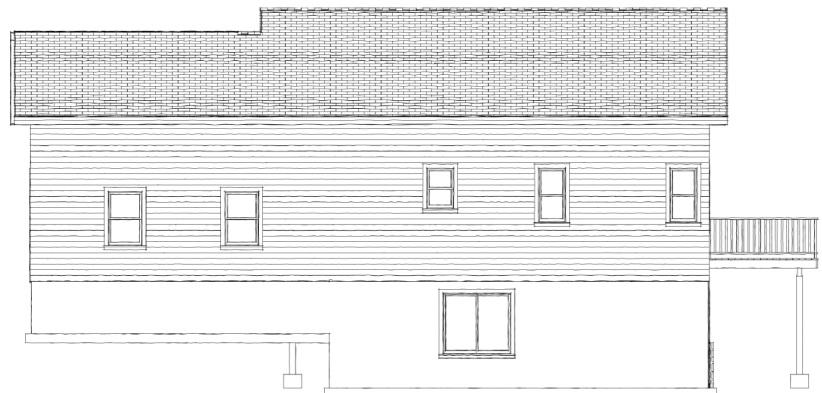
**Lakeside Elevation**



**Street Elevation**



**Left Elevation**



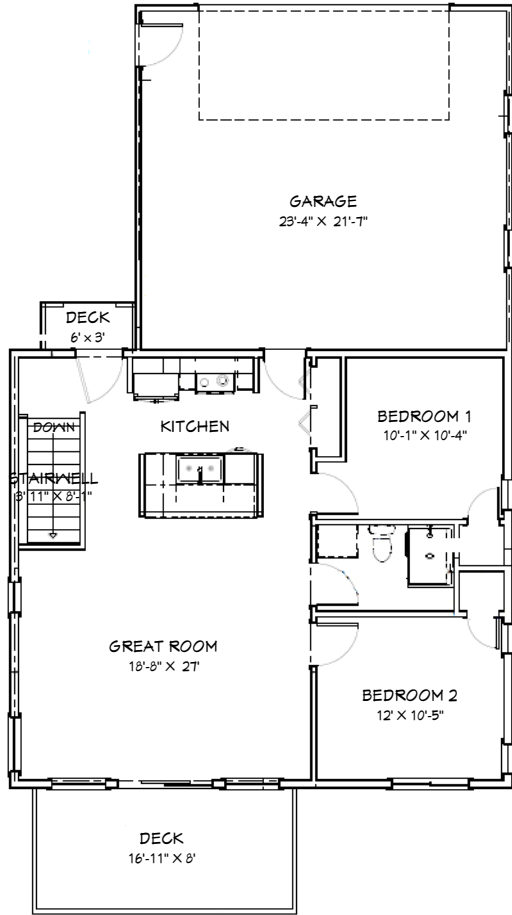
**Right Elevation**

Disclaimer: Plans may vary/change slightly.

# Option 4

**\$389K**

Only available at Sand Point Lake



**1st Floor**

## Total:

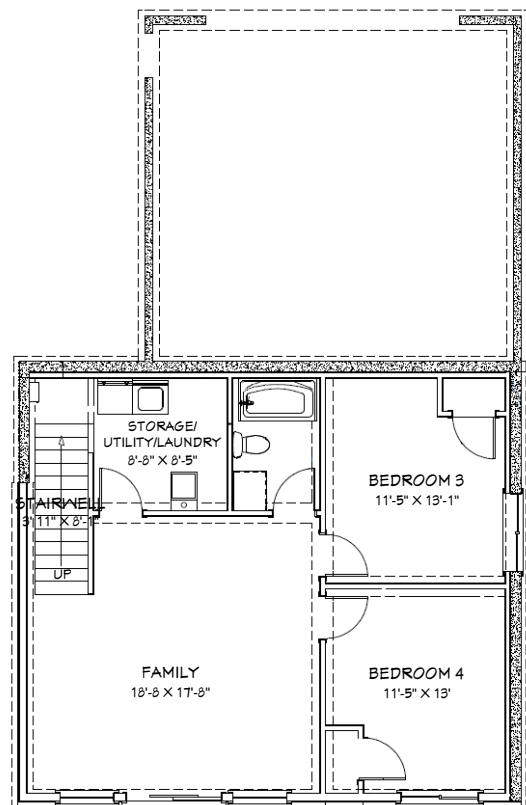
- 1,800 sq. ft.
- 4 Bedrooms & one storage/utility/laundry room
- 2 Baths
- 2-Stall Garage

## Main Level:

- Great/Living Room
- 2 Bedrooms
- 1 Bath
- Kitchen and Dining

## Walkout Basement:

- Family Room
- 2 Bedrooms
- 1 Bath
- Storage/Utility/Laundry Room



**Walkout Basement**

Disclaimer: Plans may vary/change slightly.

# Option 4

\$389K

Only available at Sand Point Lake

## Renderings:



Disclaimer: Plans may vary/change slightly.