

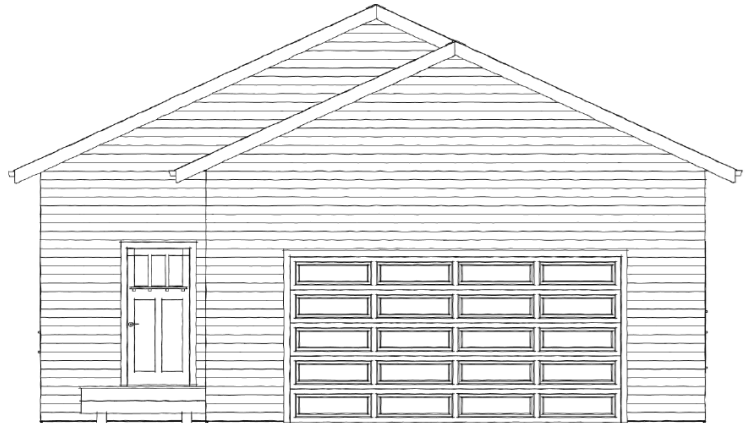
Option 4

\$349K

Only available at Sand Point Lake



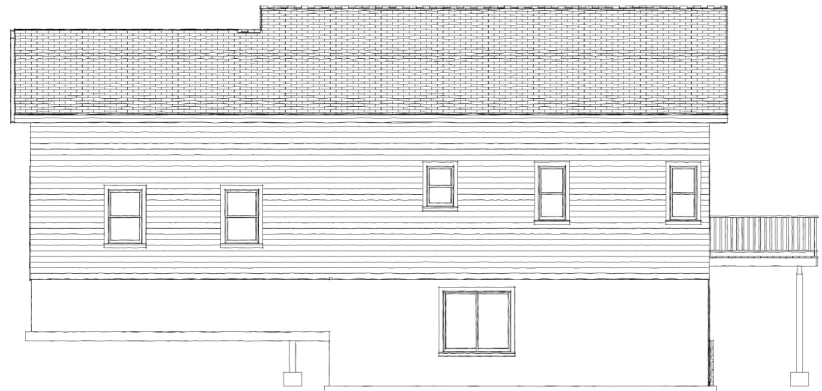
Lakeside Elevation



Street Elevation



Left Elevation



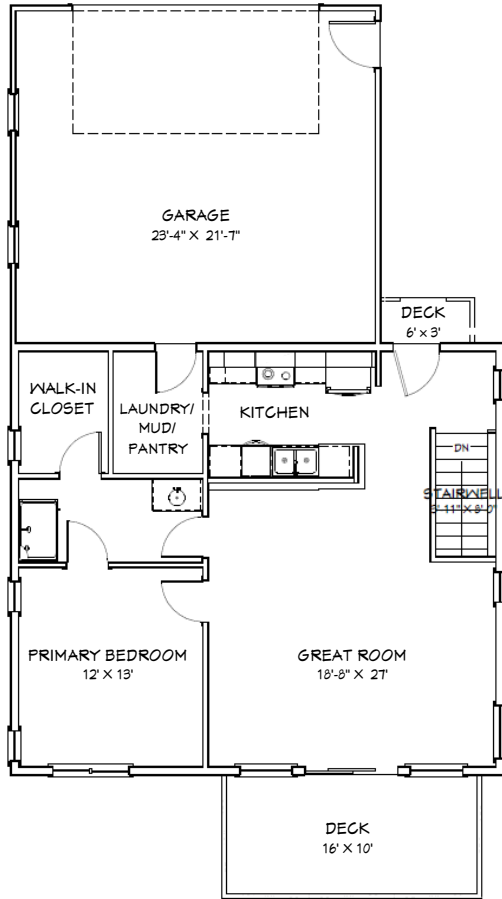
Right Elevation

Disclaimer: Plans may vary/change slightly.

Option 4

\$349K

Only available at Sand Point Lake



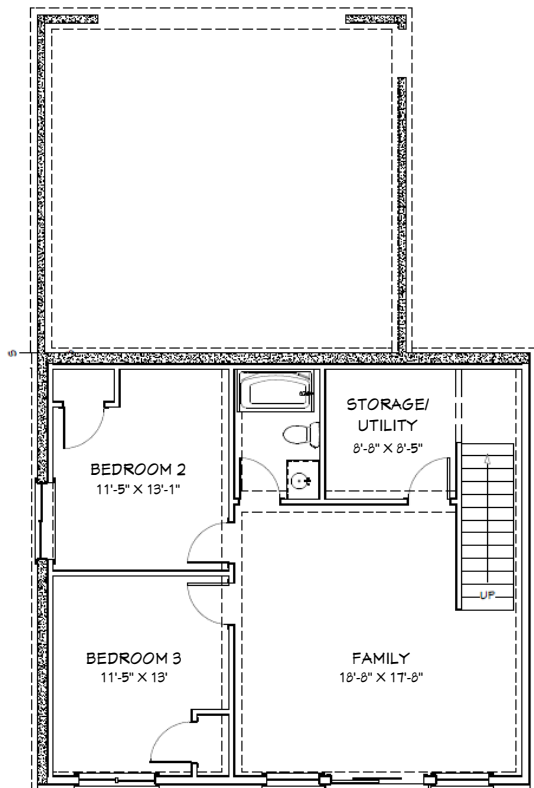
1st Floor

Total:

- 1,800 sq. ft.
- 3 Bedrooms & one storage/utility room and laundry room
- 2 Baths
- 2-Stall Garage

Main Level:

- Great/Living Room
- Primary Suite
- 1 Bath
- Kitchen and Dining



Walkout Basement

Walkout Basement:

- Family Room
- 2 Bedrooms
- 1 Bath
- Storage/Utility Room

Disclaimer: Plans may vary/change slightly.

Option 4

\$349K

Only available at Sand Point Lake

Main Floor Renderings:



Disclaimer: Plans may vary/change slightly.

Option 4

\$349K

Only available at Sand Point Lake

Walkout Basement/Lower Level Renderings:



Disclaimer: Plans may vary/change slightly.